

Bluetooth Connection Handheld Raman Analyzer For Explosives Detection

Our Product Introduction

for more products please visit us on spectralanalyser.com

Basic Information

- Place of Origin: CHINA
- Brand Name: JINSP
- Certification: CE
- Model Number: RS1500
- Minimum Order Quantity: 1
- Price: Negotiable
- Packaging Details: Customized Packaging
- Delivery Time: 70-90working days
- Payment Terms: T/T
- Supply Ability: 20 PCS/70-90 days



Product Specification

- Operation: 5' Touch Screen
- Laser: 1064nm
- Size: 160mm* 84mm * 30mm
- Feature1: Handheld And Ergonomic Design
- Feature2: Accurate And Rapid Identification Of Suspicious Substance:Material Name And Spectrogram
- Result: Name,Property,Spectrum,MSDS,Result-report
- Highlight: **Explosives Detection handheld raman analyzer, Bluetooth Connection Handheld Raman Analyzer**
,
Bluetooth Connection handheld explosive detector

Product Description

Bluetooth Connection Narcotics/Raman analyzer for Explosives Detection

JINSP® RS1500 Handheld Raman Spectrometer uses Raman spectroscopy technology, combined with intelligent algorithms and rich spectrum library, to quickly and nondestructively identify suspicious materials at sites, such as chemical weapons, toxic, explosives, drugs and precursors, etc. The RS1500 Raman Spectrometer directly gives the name and detailed information of the suspicious materials, helps operators quickly understand its characteristics. The RS1500 is applicable to customs supervision, drug prohibition, emergency management, national defense, etc.



Features:

Product Name: Narcotics/Explosives Detector

Able to detect small suspicious particles on-site by built-in microscope: Yes

Assess the risk of ignition and stop the laser automatically: Yes

Result: Name, Property, Spectrum, MSDS, Result-report

Power Supply: Rechargeable lithium battery, 4-6h

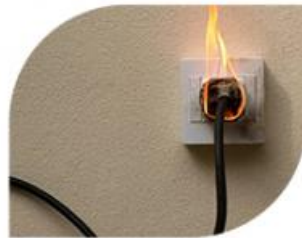
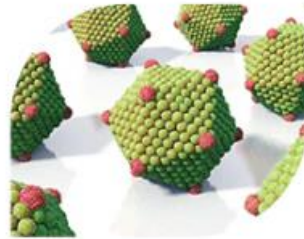
Laser: 1064nm

Characteristics



Automatic calibration without manual operation and external accessories

Able to detect small suspicious particles on-site by built-in microscope



Assess the risk of ignition and stop the laser automatically

Penetrate brown glass, some envelopes and plastic packaging



Small and light, it can be carried and operated easily

Total spectrum library is > 13,000 species, and the contraband spectrum library is > 3,000 species



Support for multiple languages



Technical Parameters:

Automatic Calibration	Yes
Support for Multiple Languages	Yes
Extensive Library	Yes
Database	Narcotics&Precursors,Explosives,Dangerous Liquid,Gem.etc
Result	Name,Property,Spectrum,MSDS,Result-report
Built-in Microscope	Yes
Laser	1064nm
Design	Handheld and Ergonomic
Power Supply	Rechargeable Lithium Battery, 4-6h
Penetration	Brown Glass, Some Envelopes and Plastic Packaging

Applications:

- Narcotics and precursors
- Chemical weapons
- Flammable and toxic liquids
- Explosives

Application Field

✓ Narcotics and precursors

Heroin, Morphine, Methamphetamine, Ketamine, cocaine, MDMA, Fentanyl, Cannabinoid, Ephedrine, Safrole, etc.

✓ Chemical weapon

GB, GD, VX, HD, etc.

✓ Flammable and toxic liquids

Gasoline, Kerosene, Diesel, Methanol, Ethanol, nitromethane, Acetone, Benzene, Toluene, Acetonitrile, Tetrahydrofuran, Chloroform, etc.

✓ Explosives

Ammonium nitrate, Potassium nitrate, C4, Composition B, TNT, RDX, HMX, TNP, TATP, etc.

✓ Other

Starch, Sucrose, Vitamin C, Paracetamol, Analgin, Polyethylene, Polystyrene, etc.



The RS1500 detects liquid and small particle (panel interface can be switched to multiple languages)

No Sampling Required

It can directly detect through woven bags, plastic, glass, paper packaging, and other types of packaging.



Woven Bag



Plastic Packaging



Plastic Barrel

Company Profile

Company Profile



Certifications



FAQ:

Here are some frequently asked questions about the JINSP RS1500 Narcotics/Explosives Detector:

Q: What is the JINSP RS1500 Narcotics/Explosives Detector?

A: The JINSP RS1500 is a handheld device that can detect narcotics and explosives in various forms, including powders, liquids, and solids. It is often used by law enforcement, security personnel, and customs officials to keep people safe.

Q: Where is the JINSP RS1500 Narcotics/Explosives Detector made?

A: The JINSP RS1500 is made in China, where it undergoes rigorous quality control testing to ensure that it meets our high standards for reliability and performance.

Q: Is the JINSP RS1500 Narcotics/Explosives Detector certified?

A: Yes, the JINSP RS1500 is CE certified, which means it meets the requirements of the European Union's health, safety, and environmental protection standards.

Q: What is the minimum order quantity for the JINSP RS1500 Narcotics/Explosives Detector?

A: The minimum order quantity for the JINSP RS1500 is 1 unit.

Q: What are the payment terms for the JINSP RS1500 Narcotics/Explosives Detector?

A: We accept payment by T/T (bank transfer). Specific payment terms can be negotiated with our sales team.

Q: What is the delivery time for the JINSP RS1500 Narcotics/Explosives Detector?

A: The delivery time for the JINSP RS1500 is 70-90 working days. This allows us to ensure that each unit is thoroughly tested and calibrated before it is shipped to our customers.

Q: What is the supply ability of the JINSP RS1500 Narcotics/Explosives Detector?

A: Our supply ability for the JINSP RS1500 is 20 units per 70-90 days, depending on the size of the order and our production schedule.

Q: What are the packaging details for the JINSP RS1500 Narcotics/Explosives Detector?

A: We offer customized packaging to meet the needs of our customers. This can include individual carrying cases, bulk packaging for larger orders, and other options as needed.



JINSP Company Ltd.

☎ 8618620854039

✉ phoebe@jinsptech.com

🌐 spectralanalyser.com

21st Floor, Building D, Tsinghua Tongfang Science and Technology Plaza, Haidian District, Beijing China