



JINSP Company Ltd.
spectralanalyser.com

30μM / 5 Pixls Compact Beam Profiler The Perfect Tool For Advanced Laser Characterization

Our Product Introduction

for more products please visit us on spectralanalyser.com

Basic Information

- Place of Origin: CHINA
- Brand Name: JINSP
- Certification: CE ISO9001 IP30 IP40
- Model Number: BA1023
- Minimum Order Quantity: 1
- Price: Negotiable
- Packaging Details: 1PC/BOX
- Delivery Time: 30 Working Days
- Payment Terms: T/T
- Supply Ability: 20PCS Per Month



Product Specification

- Dimension: 78 *45 *38.5mm (without Base)
- Maximum Frame Rate: 41 Fps@1920*1200
- Data Interface: USB3 Vision, GenICam
- Power Supply: USB Powered Or 12V DC Externally Powered
- Minimum Detection Area: 30μm (5 Pixls)
- Highlight: **Compact Beam Profiler, 30μm Beam Profiler, 5 Pixls laser beam profiler**



Product Description

Compact Beam Profiler The Perfect Tool for Advanced Laser Characterization

Product Description:

One of the special functions of this beam profiler is the real-time comparison of dual light spots. This feature allows users to compare two laser beam spots side-by-side, making it easier to identify differences in beam characteristics and adjust laser settings accordingly. Another useful function of this beam profiler is background cropping, which allows users to remove unwanted background noise from laser beam images. This can help to improve the accuracy of beam measurements and reduce errors caused by extraneous data.

The BA1023 USB 1920x1200 CMOS 280nm ~1100nm Laser Beam Spot Analysis also comes equipped with a light intensity camera, which allows users to accurately measure the intensity of laser beams. This can be useful for a variety of applications, including laser welding, cutting, and drilling.

With a signal-to-noise ratio of 40 dB, this beam profiler is capable of providing highly accurate measurements of laser beam spots. Additionally, it comes with a one-year warranty and free repair, ensuring that customers can rely on this product for accurate and reliable beam measurements.

Overall, the BA1023 USB 1920x1200 CMOS 280nm ~1100nm Laser Beam Spot Analysis is an excellent choice for anyone who needs accurate and reliable laser beam spot measurement. Whether you are working in research, manufacturing, or any other field that requires precise laser measurements, this beam profiler is sure to meet your needs.

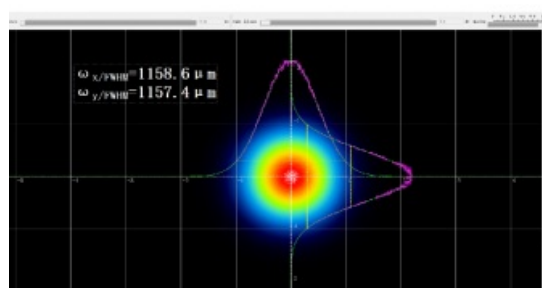
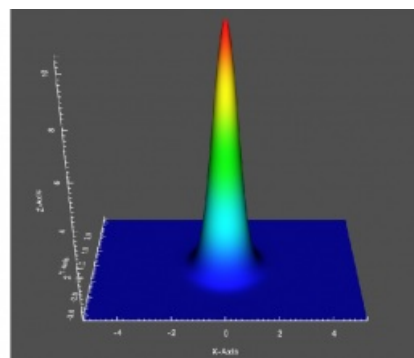
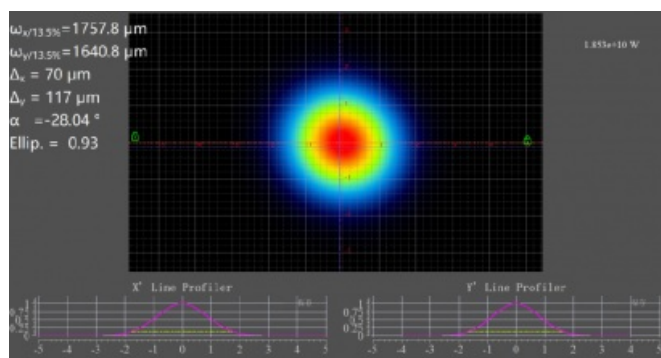
Features:

Real-time comparison of dual light spots

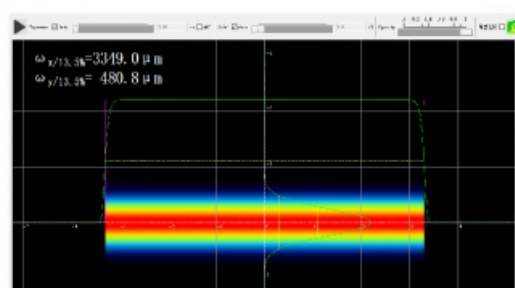
Background cropping

Light intensity camera

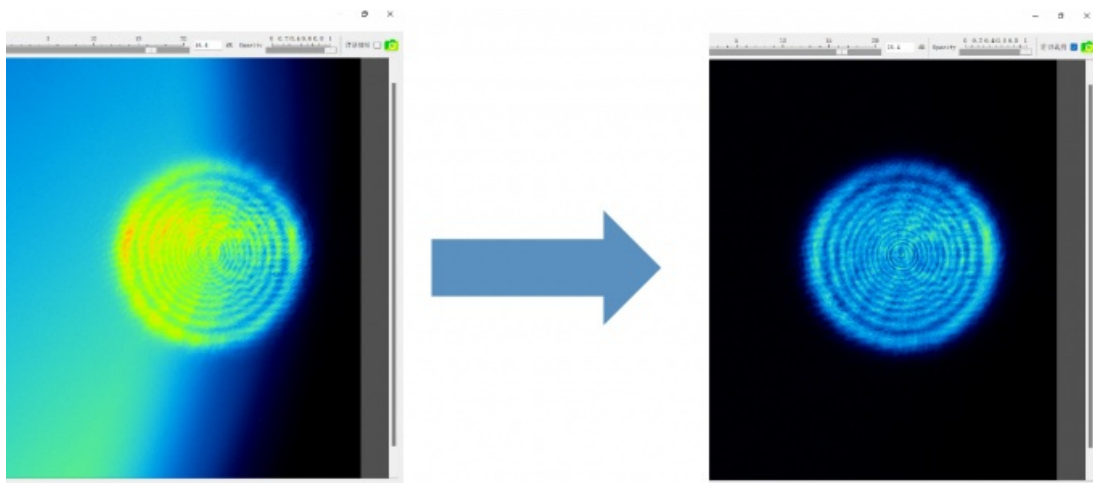
Power Supply: USB Powered Or 12V DC Externally Powered



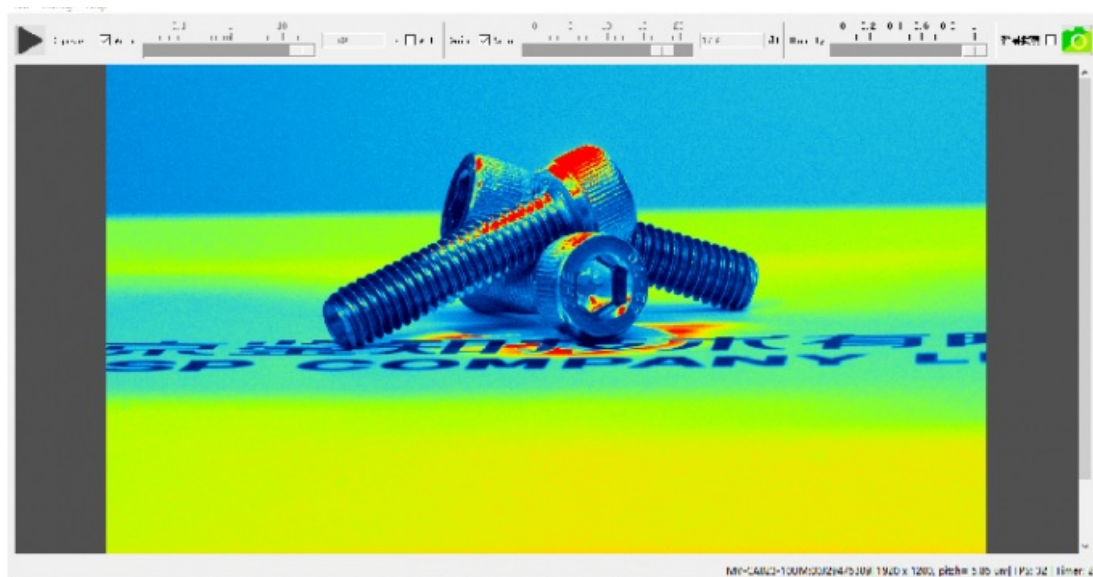
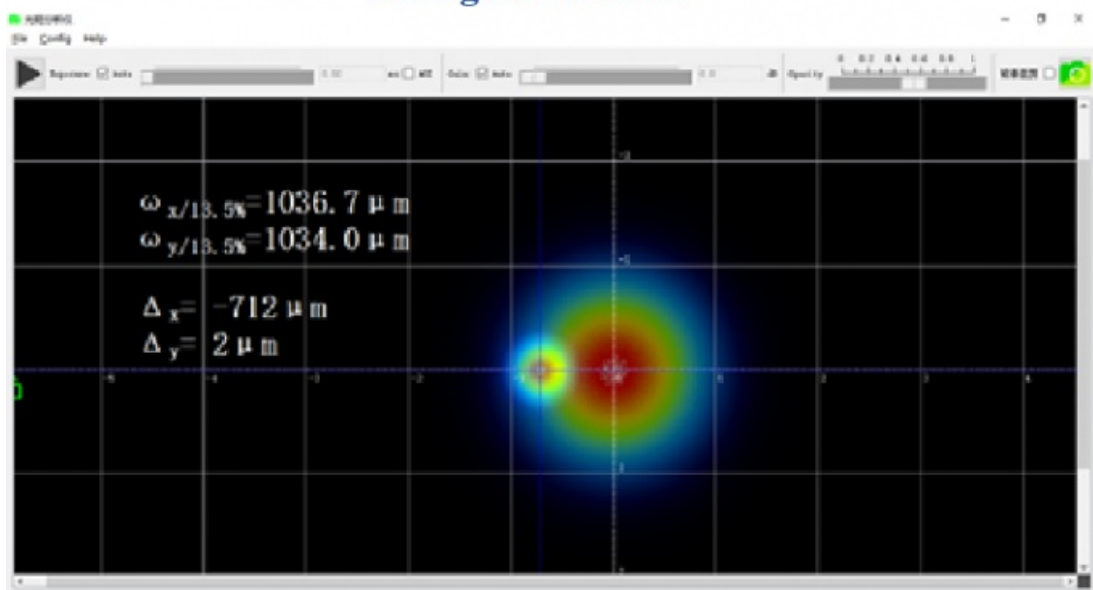
Gaussian Fitting



Gaussian & Super-Gaussian fitting



Background Shear



Technical Parameters:

Product Name	BA1023 USB 1920x1200 CMOS 280nm ~1100nm Laser Beam Spot Analysis
Data Interface	USB3 Vision, GenICam
SNR	40 DB
Power Supply	USB Powered Or 12V DC Externally Powered
Minimum Detection Area	30 μ m (5 Pixels)
Wavelength Range	280nm-1100nm

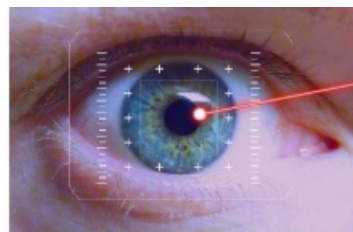
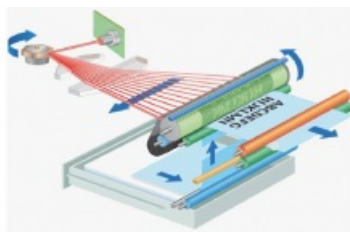
Effective Sensing Area	11mm*7mm
Cell Size	5.86μm*5.86μm
Sensor	2.3MP, 1/1.2" CMOS
Dimension	78 *45 *38.5mm (without Base)

Applications:

The JINSP BA1023 Beam Profiler is designed to work with lasers in the wavelength range of 280nm-1100nm. The product has unique features like real-time comparison of dual light spots, background cropping, and light intensity camera, which makes it an ideal tool for beam profiling applications. .

The JINSP BA1023 Beam Profiler finds its application in various scenarios, including but not limited to, laser manufacturing, laser research, and development, laser medical treatment, and military applications. It is a must-have tool for anyone who needs to measure and analyze laser beams accurately.

The product falls under the category of lasers and has a cell size of 5.86μm*5.86μm. Its compact size and advanced features make it a versatile tool for all kinds of laser beam profiling applications. It is easy to use and provides accurate results, making it a popular choice among professionals.



Support and Services:

Our Beam Profiler product comes with comprehensive technical support and services to ensure that our customers are able to fully utilize the capabilities of the product. These include:

- Assistance with installation and setup of the product
- Troubleshooting and diagnosis of any problems that may arise during use
- Regular software updates to maintain compatibility with new technologies
- Training and educational resources to help customers learn how to best use the product
- Repair and replacement services for any damaged or malfunctioning components

Our team of technical experts is available to provide assistance and support to our customers throughout the lifetime of the product. We are committed to ensuring that our customers receive the highest level of service and support for their Beam Profiler.

Packing and Shipping:

Product Packaging:

- 1 Beam Profiler
- 1 USB cable
- 1 USB with software and user manual
- 1 Carrying case

FAQ:

Q1: What is the brand name of this beam profiler?

A1: The brand name of this beam profiler is JINSP.

Q2: What is the model number of this beam profiler?

A2: The model number of this beam profiler is BA1023.

Q4: What are the payment terms for this beam profiler?

A4: The payment terms for this beam profiler are T/T.

Q5: What is the delivery time for this beam profiler?

A5: The delivery time for this beam profiler is 30 working days.



JINSP Company Ltd.



8618620854039



phoebeyu@jinsptech.com



spectralanalyser.com

21st Floor, Building D, Tsinghua Tongfang Science and Technology Plaza, Haidian District, Beijing China