

12V DC Externally Powered Laser Beam Profiler For Industrial Applications

Our Product Introduction

for more products please visit us on spectralanalyser.com

Basic Information

- Place of Origin: CHINA
- Brand Name: JINSP
- Certification: CE ISO9001 IP30 IP40
- Model Number: BA1023
- Minimum Order Quantity: 1
- Price: Negotiable
- Packaging Details: 1PC/BOX
- Delivery Time: 30 Working Days
- Payment Terms: T/T
- Supply Ability: 20PCS Per Month



Product Specification

- Effective Sensing Area: 11mm*7mm
- SNR: 40 DB
- Maximum Frame Rate: 41 Fps@1920*1200
- Data Interface: USB3 Vision, GenICam
- Power Supply: USB Powered Or 12V DC Externally Powered
- Support Operating Systems: Windows 10(64bit)and Linux(Ubuntu X86)
- Highlight: **12V DC Laser Beam Profiler,
Industrial Laser Beam Profiler,
12V DC laser beam analyzer**



Product Description

12V DC Externally Powered Beam Profiler for Industrial Laser Applications

Product Description:

Our Beam Profiler supports two operating systems: Windows 10 (64-bit) and Linux (Ubuntu X86), making it a versatile and user-friendly device for a wide range of applications. With a maximum frame rate of 41 FPS@1920*1200, this device is perfect for high-speed laser measurement applications.

Featuring a signal-to-noise ratio (SNR) of 40 dB, our Beam Profiler provides accurate and reliable measurements of laser beam spot sizes in even the most demanding environments. Whether you're working in a research laboratory or an industrial setting, our device is designed to deliver consistent and accurate results every time.

Our Beam Profiler is powered by a USB connection, making it easy to use and transport. However, for applications where external power is required, the device can also be powered by a 12V DC external power supply. This flexibility ensures that our Beam Profiler can be used in a wide range of settings and applications.

The Beam Profiler is a product category of lasers, making it an essential tool for anyone who works with lasers. Whether you're a researcher, a scientist, or an engineer, this device is designed to help you accurately measure laser beam spot sizes and ensure the success of your projects.

Invest in our Beam Profiler today and experience the benefits of accurate and reliable laser beam spot measurements. With its advanced features, versatile design, and high-quality construction, this device is sure to become an essential tool in your laboratory or industrial setting.

Features:

Effective Sensing Area: 11mm*7mm

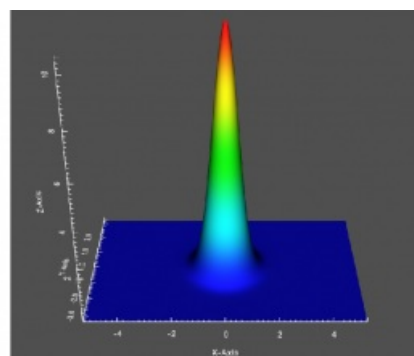
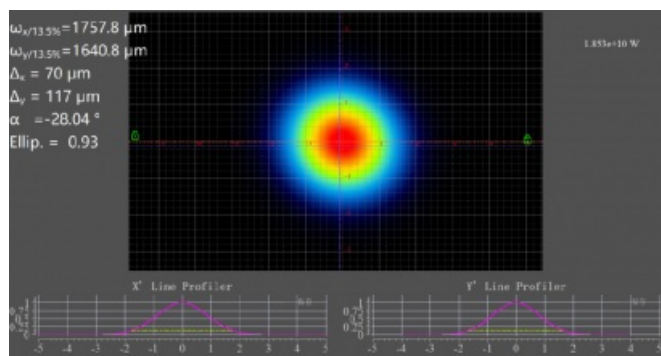
Cell Size: 5.86 μ m*5.86 μ m

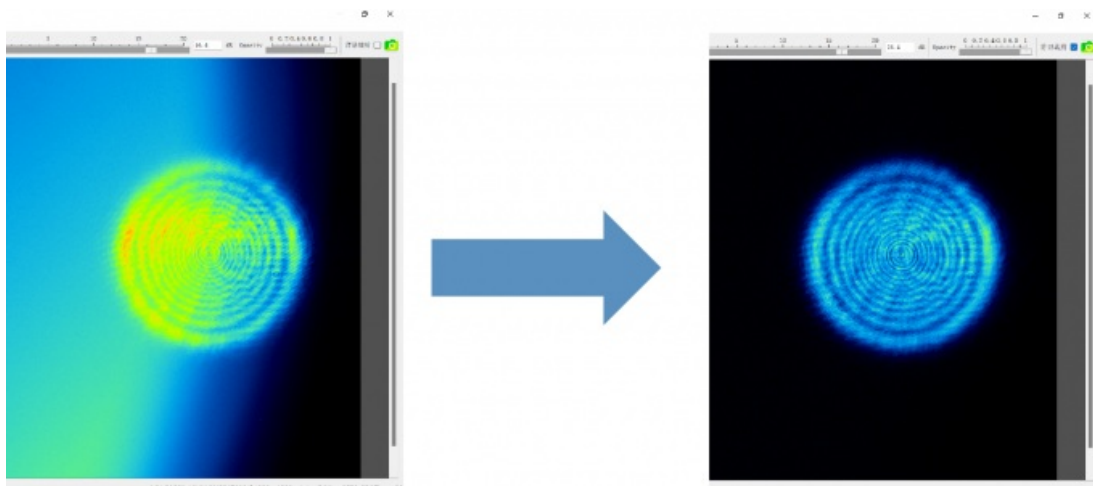
Support Operating Systems: Windows 10(64bit) and Linux(Ubuntu X86)

Special Functions: Real-time comparison of dual light spots, background cropping, and light-intensity camera

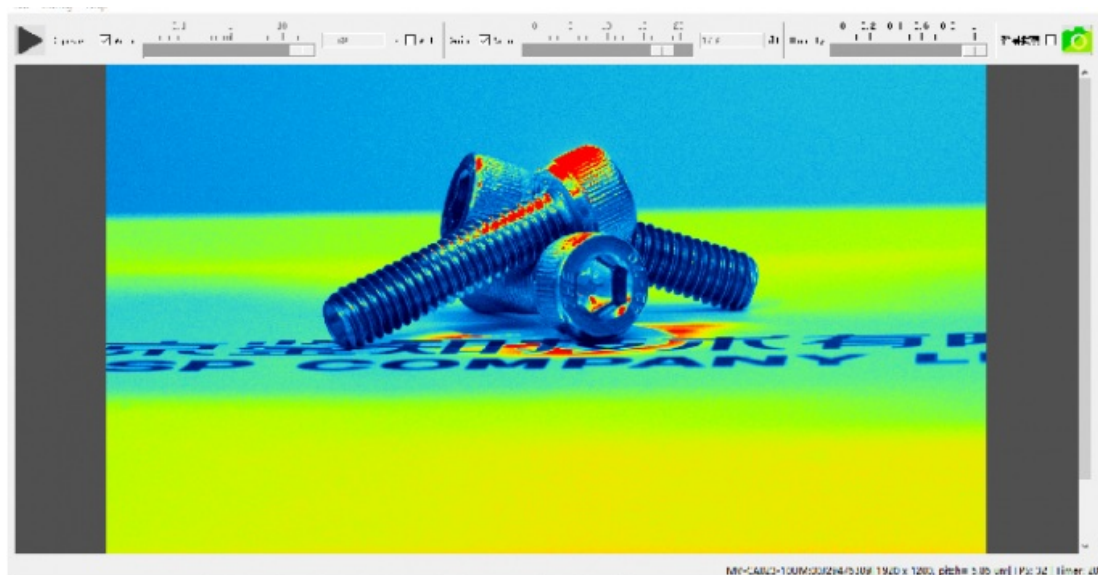
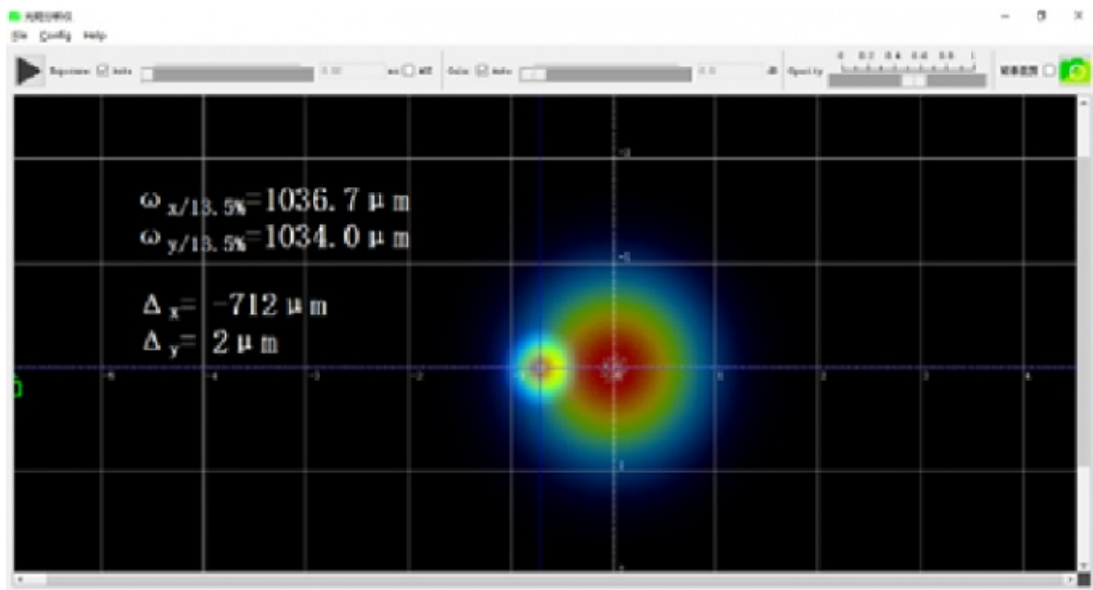
Technical Parameters:

Technical Parameters	Values
Special Functions	Real-time comparison of dual light spots, background cropping, and light-intensity camera
SNR	40 DB
Cell Size	5.86 μ m*5.86 μ m
Dimension	78 *45 *38.5mm (without Base)
Effective Sensing Area	11mm*7mm
Maximum Frame Rate	41 Fps@1920*1200
Wavelength Range	280nm-1100nm
Power Supply	USB Powered Or 12V DC Externally Powered





Background Shear



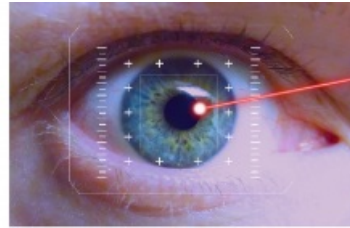
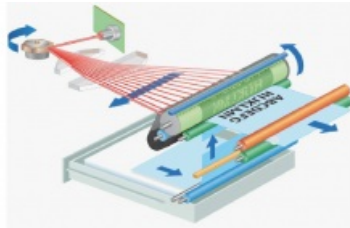
Applications:

JINSP BA1023 Beam Profiler is a highly advanced device that is designed to measure and analyze laser beam spots in real-time. It is an ideal tool for researchers, engineers, and scientists who work with laser beams and need accurate measurements to optimize their experiments and designs. With a minimum detection area of $30\mu m$ (5 pixels) and an SNR of 40DB, this device provides highly precise measurements under varying conditions.

The JINSP BA1023 Beam Profiler is suitable for a wide range of applications in industries such as aerospace, defense, medical, and manufacturing. It is especially useful in applications where precise and accurate laser beam spot measurement is critical. The device can be used in research labs, manufacturing facilities, and other industrial settings.

The device comes with a range of special functions that make it easy to use and highly efficient in its work. It features real-time comparison of dual light spots, background cropping, and light intensity camera that helps to improve the accuracy of the measurements. The device is also equipped with a USB 1920x1200 CMOS camera that provides high-quality images of the laser beam spot.

The JINSP BA1023 Beam Profiler is compatible with Windows 10 (64bit) and Linux (Ubuntu X86) operating systems and comes with CE. In summary, the JINSP BA1023 Beam Profiler is a highly advanced and efficient device for laser beam spot measurement. It is suitable for a wide range of applications and industries and provides highly precise measurements under varying conditions. The device is easy to use, comes with a range of special functions, and is compatible with Windows and Linux operating systems.



Support and Services:

Our Beam Profiler product comes with a comprehensive technical support package to ensure that you get the most out of your device. Our team of experts is available to answer any technical questions you may have, as well as provide troubleshooting assistance when necessary.

In addition to technical support, we also offer a range of services to help you maintain and optimize your Beam Profiler:

Calibration: We offer calibration services to ensure that your device is operating at peak performance.

Repair: If your device is in need of repair, we have a team of technicians who can diagnose and fix any issues.

Training: We offer training sessions to help you and your team get up to speed on using the Beam Profiler.

Software Updates: We regularly release software updates to improve the functionality and performance of your Beam Profiler.

With our technical support and services, you can be confident that your Beam Profiler will always be operating at its best.

Packing and Shipping:

Our Beam Profiler product is carefully packaged to ensure safe delivery to our customers. Each unit is first wrapped in protective material to prevent any scratches or damage during transport. The wrapped unit is then placed inside a sturdy cardboard box with additional padding to prevent any movement during shipping.

For shipping, we use trusted carriers to ensure that your product arrives on time and in good condition. We offer a variety of shipping options to choose from, including standard, expedited, and overnight delivery.

Once your order has been shipped, we will provide you with a tracking number so you can monitor the status of your delivery. If you have any questions or concerns about your shipment, please don't hesitate to contact us.

FAQ:

What is the JINSP BA1023 Beam Profiler?

The JINSP BA1023 Beam Profiler is a device that measures the spatial intensity distribution of a laser beam.

Where is the JINSP BA1023 Beam Profiler manufactured?

The JINSP BA1023 Beam Profiler is manufactured in China.

What is the minimum order quantity for the JINSP BA1023 Beam Profiler?

The minimum order quantity for the JINSP BA1023 Beam Profiler is 1.

What is the delivery time for the JINSP BA1023 Beam Profiler?

The delivery time for the JINSP BA1023 Beam Profiler is 30 working days.



JINSP

JINSP Company Ltd.



8618620854039



phoebeyu@jinsptech.com



spectralanalyser.com

21st Floor, Building D, Tsinghua Tongfang Science and Technology Plaza, Haidian District, Beijing China